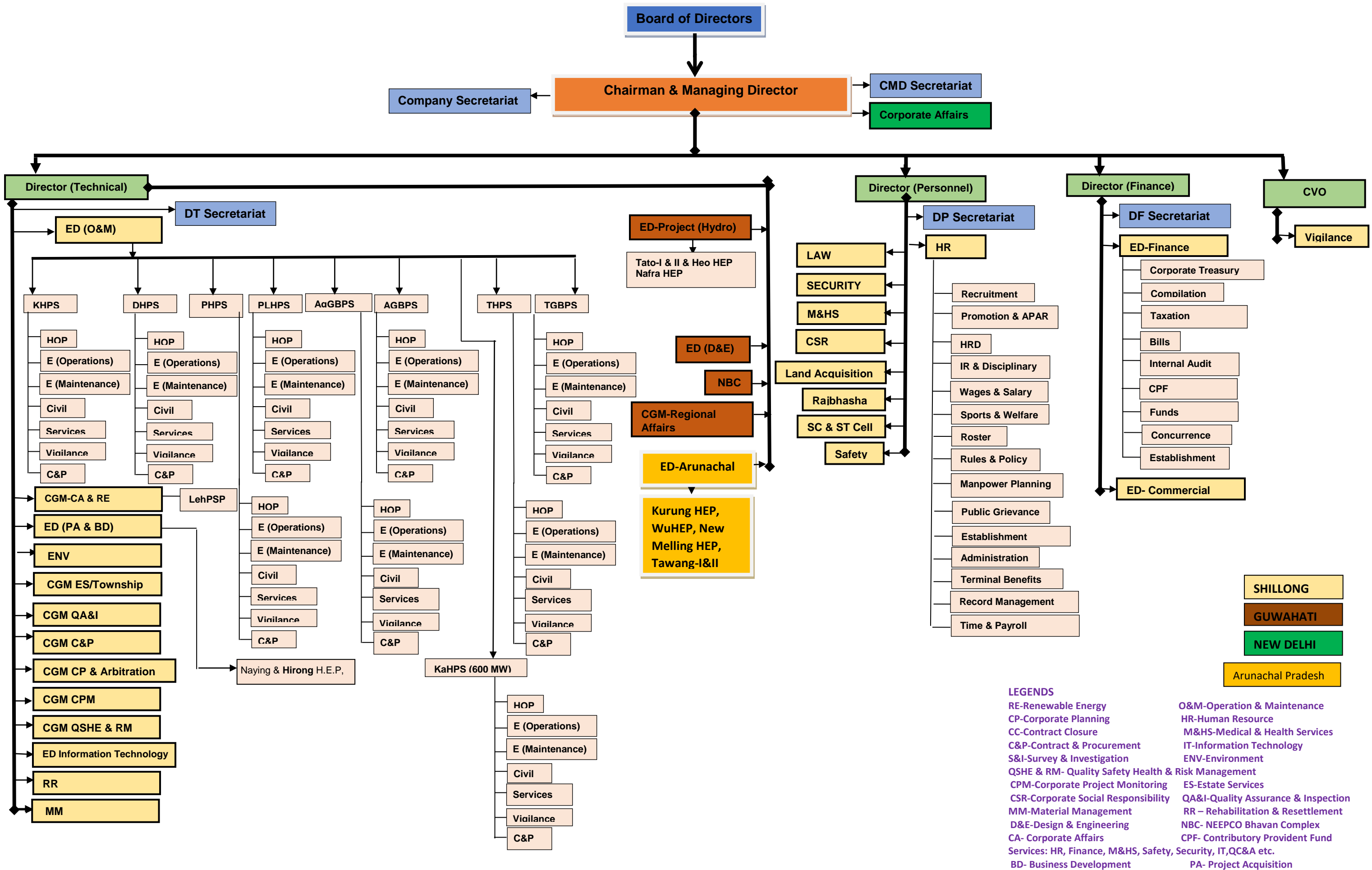


ORGANISATIONAL STRUCTURE (UPDATED AS ON 01.03.2024)



- LEGENDS**
- RE-Renewable Energy
 - CP-Corporate Planning
 - CC-Contract Closure
 - C&P-Contract & Procurement
 - S&I-Survey & Investigation
 - QSHE & RM- Quality Safety Health & Risk Management
 - CPM-Corporate Project Monitoring
 - CSR-Corporate Social Responsibility
 - MM-Material Management
 - D&E-Design & Engineering
 - CA- Corporate Affairs
 - Services: HR, Finance, M&HS, Safety, Security, IT, QC&A etc.
 - BD- Business Development
 - O&M-Operation & Maintenance
 - HR-Human Resource
 - M&HS-Medical & Health Services
 - IT-Information Technology
 - ENV-Environment
 - QSHE & RM- Quality Safety Health & Risk Management
 - ES-Estate Services
 - QA&I-Quality Assurance & Inspection
 - RR – Rehabilitation & Resettlement
 - NBC- NEEPCO Bhavan Complex
 - CPF- Contributory Provident Fund
 - PA- Project Acquisition